



GRAND HILAI

TAIPEI

台北漢來大飯店

會議中心

MEETING CENTER

飯店規劃5間多功能會議室及交誼廳，配備120吋P2LED電視牆、Bose智慧型藍芽音響、Barco無線投影、4K錄影系統等最高規格會議設施，滿足國際及本地商務會議、主題年會、新品發表會、小型展演、VIP活動等多元活動需求，容納人數自21至130人不等。

The hotel offers 5 multi-functional conference rooms and lounges equipped with the highest standard conference facilities such as 120" P2 LED TV wall, Bose Smart Bluetooth speakers, 4K distribution matrix system, Barco wireless projectors. These facilities can satisfy the needs of international and local business meetings, annual conferences, new product launches, small-scale exhibitions, VIP events, etc., and can accommodate a total capacity ranging from 21 to 130 persons.



洽詢電話：02-8170-0570 或 02-2788-8566 轉 分機8240會議中心
02-8170-0570 & 02-2788-8566 ext. 8240 Meeting Center

台北漢來大飯店 GRAND HILAI TAIPEI 115台北市南港區經貿一路168號

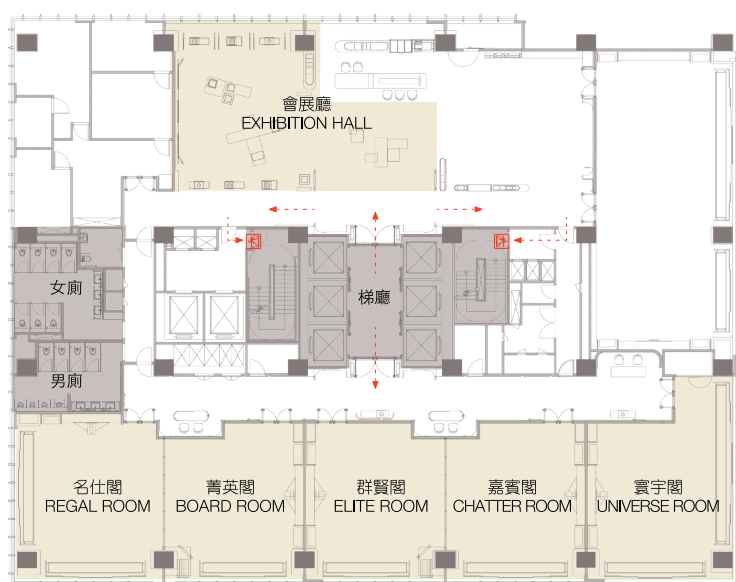
No. 168, Jingmao 1st Road, Nangang District, Taipei City 115, Taiwan T +886-2-2788-6868 F +886-2-8170-0577

www.grand-hilai.com.tw/taipei

場地容量 CAPACITY CHARTY

廳名 Function Room	面積尺寸 Dimension			場地安排 Setup (人數 Person)					
	坪數 Pings	高度 height	平方公尺 Sq.M	教室型 Classroom		劇院型 Theater		U字型 U Shape	
名仕閣 REGAL ROOM	25	3	83	42	81	70	130	21	
菁英閣 BOARD ROOM	23	3	77	36		60		21	
群賢閣 ELITE ROOM	23	3	77	36	72	60	120	21	
嘉賓閣 CHATTER ROOM	23	3	77	36		60		21	
寰宇閣 UNIVERSE ROOM	27	3	90	42		70		21	
會展廳 EXHIBITION HALL	45	3	150	雞尾酒會型 Cocktail Party					
				60					

平面圖 FLOOR PLAN



場地租賃費用 ROOM RENTAL

設備進撤場，最早可07:00進場，最晚需於22:00前離開；如有提前進場或延後使用之需求，將依實際使用時間加收相關費用。
EQUIPMENT SET-UP AND DISMANTLING ARE PERMITTED FROM 7:00 A.M. TO 10:00 P.M. ANY EARLY ACCESS OR EXTENDED USE WILL BE SUBJECT TO ADDITIONAL CHARGES BASED ON ACTUAL USAGE.

廳名 Function Room	08:30-12:00	13:30-16:30	08:30-16:30	18:00-21:00	逾時費用 Overtime (每小時 / Per Hour)
名仕閣 REGAL ROOM	\$40,000	\$40,000	\$75,000	\$60,000	\$13,000
菁英閣 BOARD ROOM	\$40,000	\$40,000	\$75,000	\$60,000	\$13,000
群賢閣 ELITE ROOM	\$40,000	\$40,000	\$75,000	\$60,000	\$13,000
嘉賓閣 CHATTER ROOM	\$40,000	\$40,000	\$75,000	\$60,000	\$13,000
寰宇閣 UNIVERSE ROOM	\$56,000	\$56,000	\$110,000	\$84,000	\$18,000
名仕閣+菁英閣 REGAL ROOM+BOARD ROOM	\$80,000	\$80,000	\$150,000	\$120,000	\$25,000
群賢閣+嘉賓閣 ELITE ROOM+CHATTER ROOM	\$80,000	\$80,000	\$150,000	\$120,000	\$25,000
會展廳 EXHIBITION HALL	\$80,000	\$80,000	\$150,000	\$120,000	\$25,000

- 上述價格均需額外加 10% 服務費 The above rates are subject to 10% service charge. (單位：新台幣NT\$/元)
- 上述價格若有更動，恕不另行通知 The above rates are subject to change without notice.
- 上述價格於國際專業展期間不適用 (定義依照飯店官網公告為主)
The above rates do not apply during international trade show periods (as defined and announced on the hotel's official website).